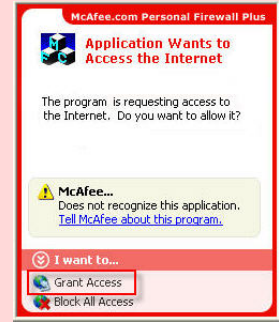
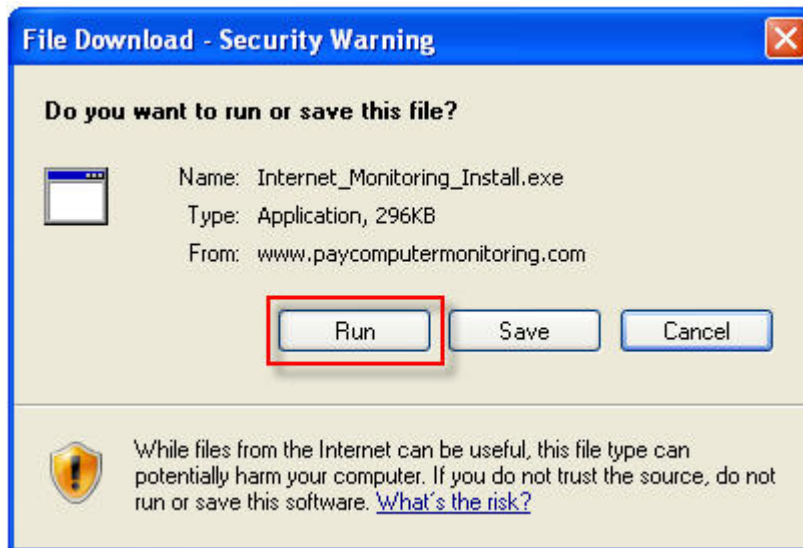


Monitoring Software Self-Installation Instructions

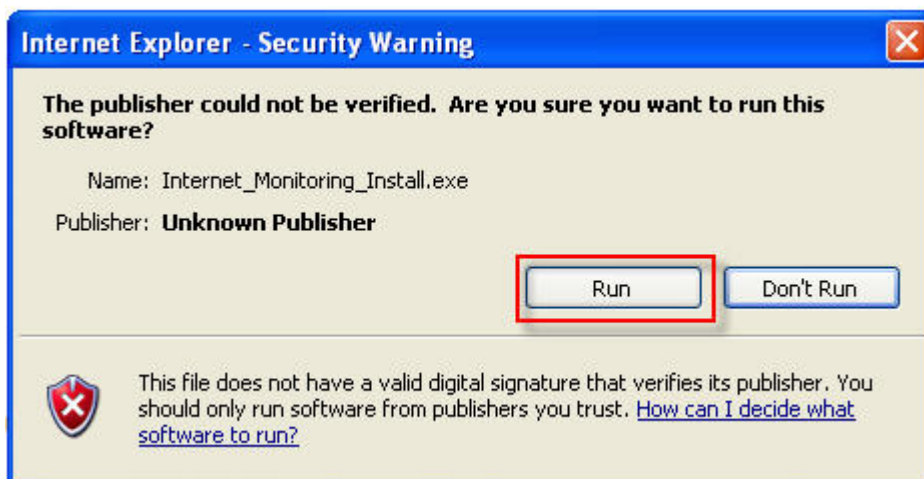
CRITICAL INSTALLATION WARNING: IF YOU HAVE ANY FIREWALLS INSTALLED ON YOUR MACHINE, YOU ARE LIKELY TO RECEIVE WARNING MESSAGES FROM THOSE FIREWALLS DURING THE INSTALLATION OF THE MONITORING SOFTWARE. THESE MESSAGES WILL VARY DEPENDING ON THE TYPE OF FIREWALL, BUT REGARDLESS OF THE FIREWALL, **IT IS CRITICAL THAT YOU SELECT "GRANT ACCESS", "ALWAYS ALLOW", "YES" OR WHICHEVER OPTION ALLOWS THE MONITORING SOFTWARE TO ACCESS THE INTERNET.** FAILURE TO CHOOSE THIS OPTION WILL DISABLE YOUR INTERNET ACCESS ONCE THE SOFTWARE IS INSTALLED MEANING YOU WILL BE UNABLE TO ACCESS AND USE THE INTERNET.



1. To start the installation processes, **CLICK THE "START INSTALLATION"** button on PayComputerMonitoring.com.
2. A dialogue box will open asking you to run or save the file. **CLICK RUN.** In some browser settings, you may not be given the option to *run*, but an option to *open* or *save*. In this case, simply select open.



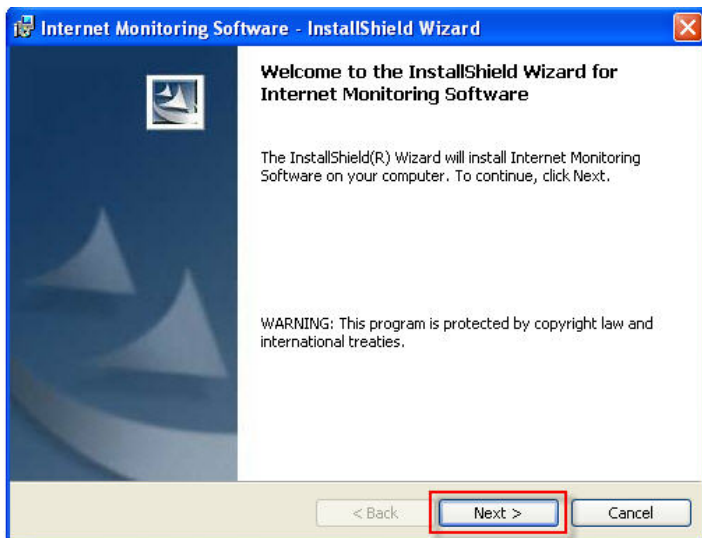
3. A second dialogue box may appear announcing the publisher file could not be verified. Simply **CLICK RUN.**



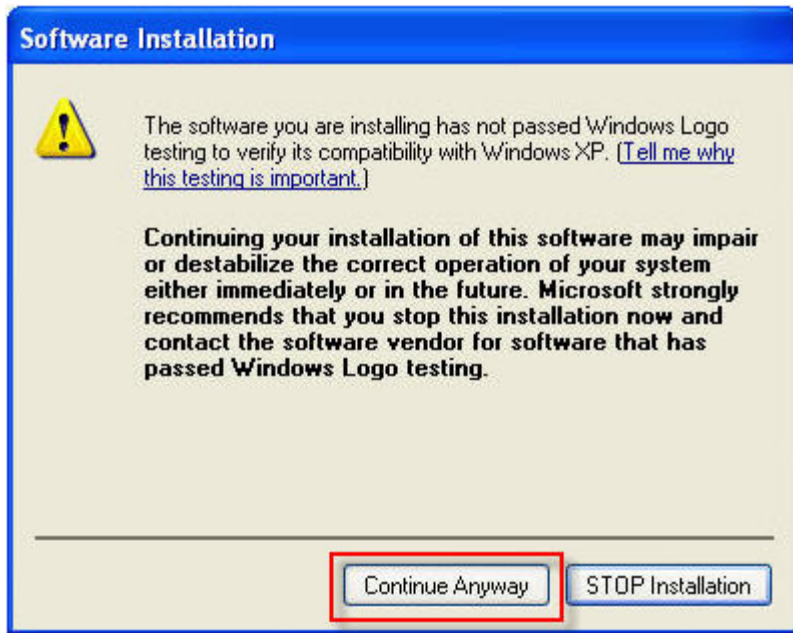
4. When the "Internet Monitoring Install" window appears, **ENTER THE CASE NUMBER** provided to you by your case manager and **SELECT OK.**



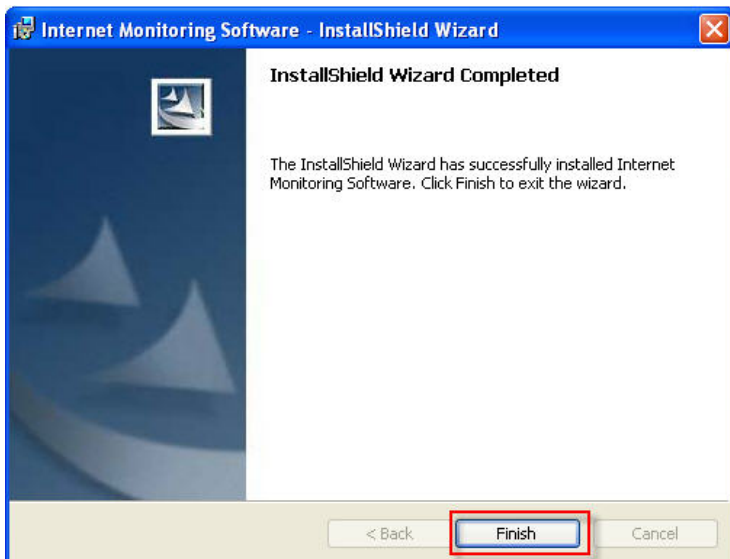
5. You will then be prompted to verify your agency to the case number. If correct, **CLICK "YES."**
6. **CLICK NEXT** when the internet Monitoring InstallShield Wizard opens.



7. You will be prompted with the question **"Does this machine access the internet through a high-speed connection (NOT Dialup)?"** Answer the question according to the configurations of the machine.
8. If prompted with messages about Windows Logo testing, simply **CLICK "CONTINUE ANYWAY."** The number of messages that appear will differ from machine to machine, but typically you can expect to see anywhere from 3-5 messages.



9. **CLICK FINISH** when the Internet Monitoring InstallShield Wizard opens.



10. **SELECT "YES"** when prompted to restart the machine.

